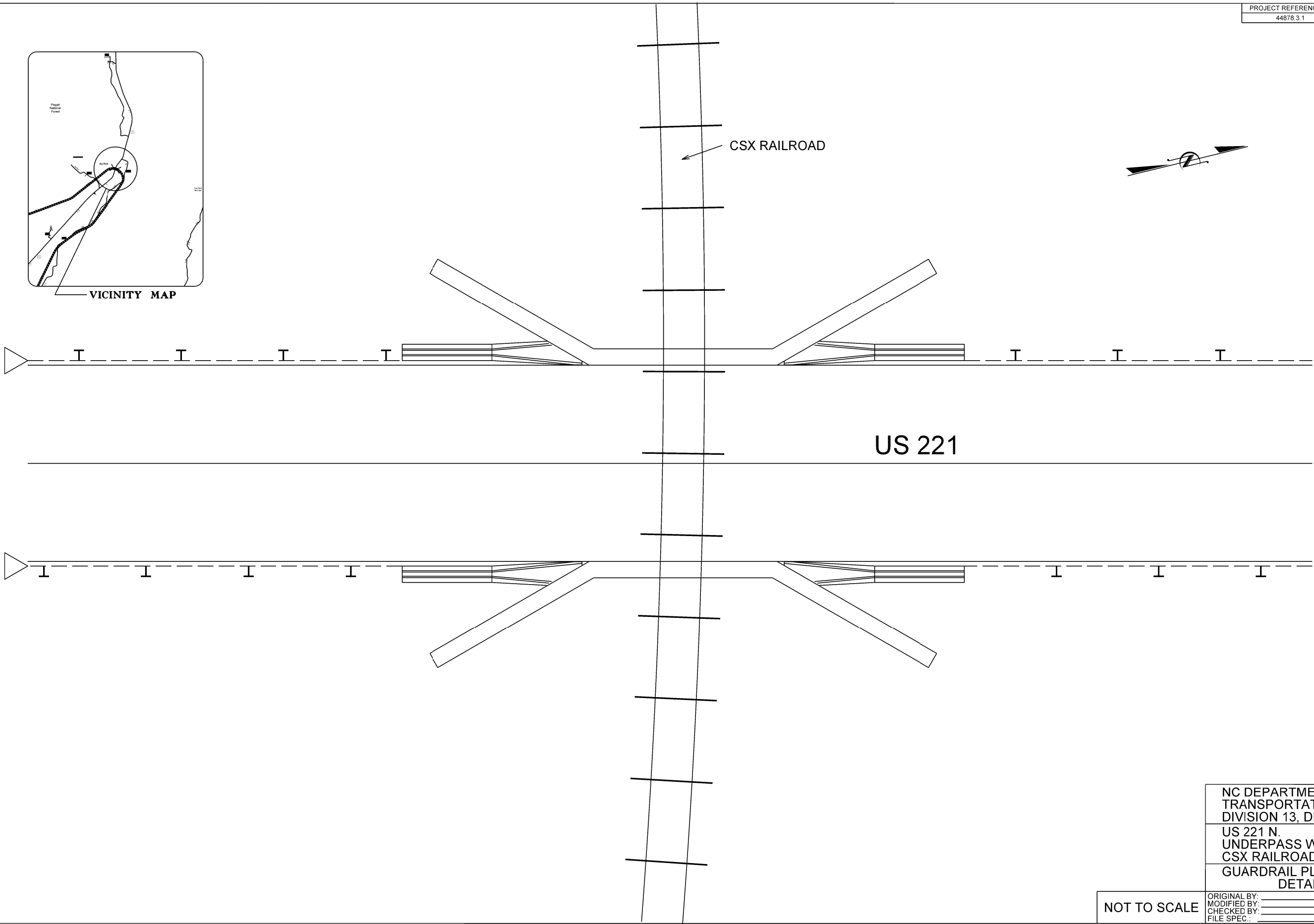


VICINITY MAP



CSX RAILROAD



US 221

NC DEPARTMENT OF  
TRANSPORTATION  
DIVISION 13, DISTRICT 1  
US 221 N.  
UNDERPASS WITH  
CSX RAILROAD  
GUARDRAIL PLACEMENT  
DETAIL

NOT TO SCALE

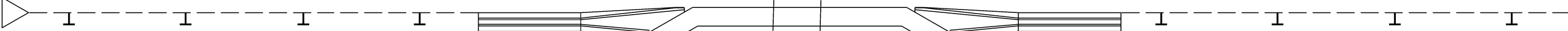
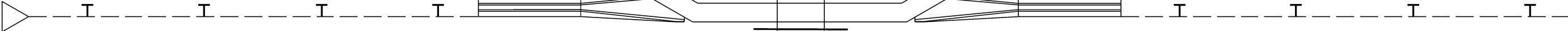
ORIGINAL BY: \_\_\_\_\_ DATE: \_\_\_\_\_  
MODIFIED BY: \_\_\_\_\_ DATE: \_\_\_\_\_  
CHECKED BY: \_\_\_\_\_ DATE: \_\_\_\_\_  
FILE SPEC: \_\_\_\_\_



CSX RAILROAD

PLACE 1 EACH PCB TRANSITION ( LEFT SIDE )  
 PLACE 10' L.F. PCB  
 PLACE 1 EACH B-77  
 PLACE APPROXIMATELY 50' L.F. GUARDRAIL  
 PLACE 1 EACH GRAU-350

PLACE 1 EACH PCB TRANSITION ( RIGHT SIDE )  
 PLACE 10' L.F. PCB  
 PLACE 1 EACH B-77  
 PLACE APPROXIMATELY 200' L.F. GUARDRAIL  
 REMOVE 50' L.F. GUARDRAIL  
 ATTACH TO EXISTING GUARDRAIL



PLACE 1 EACH PCB TRANSITION ( RIGHT SIDE )  
 PLACE 10' L.F. PCB  
 PLACE 1 EACH B-77  
 PLACE APPROXIMATELY 50' L.F. GUARDRAIL  
 PLACE 1 EACH GRAU-350

PLACE 1 EACH PCB TRANSITION ( LEFT SIDE )  
 PLACE 10' L.F. PCB  
 PLACE 1 EACH B-77  
 PLACE APPROXIMATELY 200' L.F. GUARDRAIL  
 REMOVE 50' L.F. GUARDRAIL  
 ATTACH TO EXISTING GUARDRAIL

GENERAL NOTES

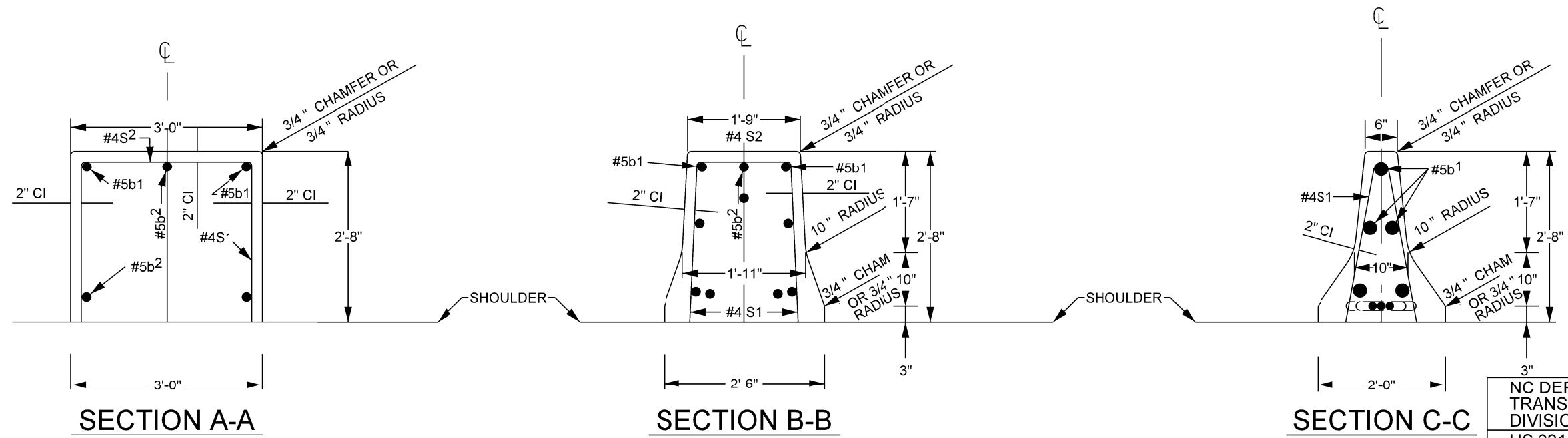
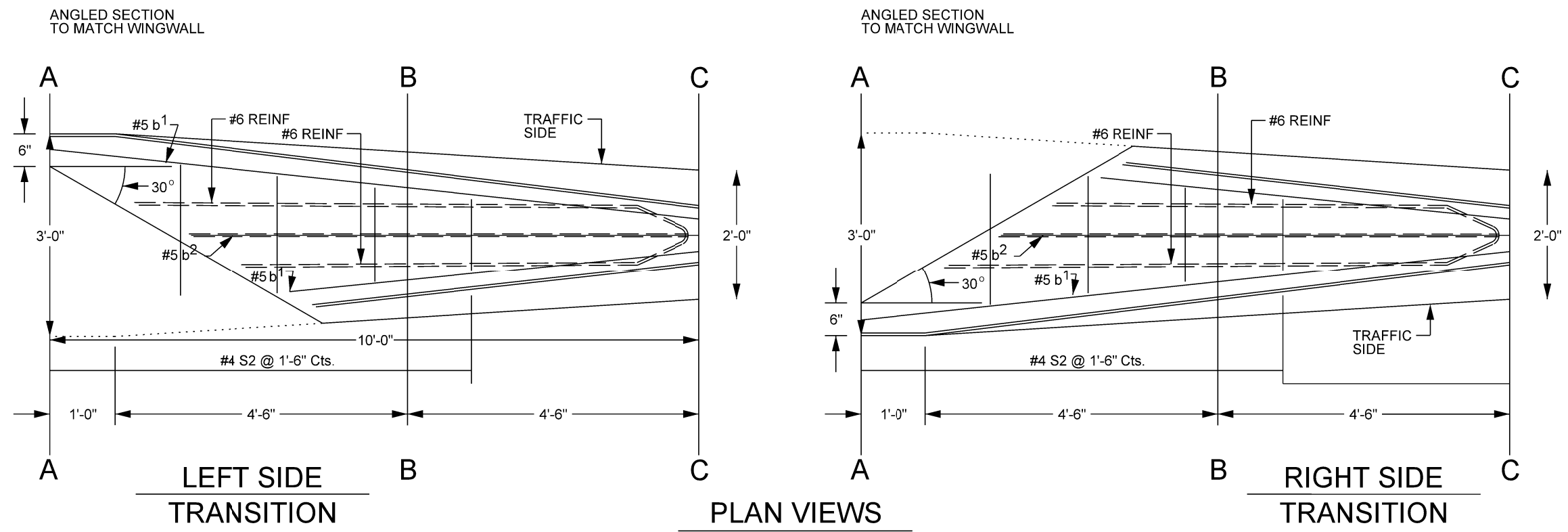
FINAL SHAPING AND FINE GRADING  
 REQUIRED UNDER PCB TRANSITIONS  
 AND PORTABLE CONCRETE BARRIER  
 WILL BE THE RESPONSIBILITY OF THE  
 CONTRACTOR.

NC DEPARTMENT OF  
 TRANSPORTATION  
 DIVISION 13, DISTRICT 1  
 US 221 N.  
 UNDERPASS WITH  
 CSX RAILROAD

PLAN VIEW

NOT TO SCALE

ORIGINAL BY: _____	DATE: _____
MODIFIED BY: _____	DATE: _____
CHECKED BY: _____	DATE: _____
FILE SPEC.: _____	



**GENERAL NOTES**

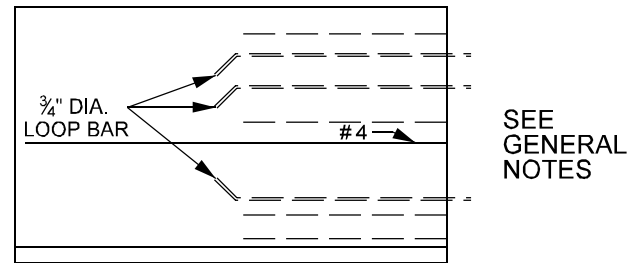
CONSTRUCT PCB TRANSITIONS IN ACCORDANCE WITH THE DETAILS IN THE PLANS AND THE APPLICABLE REQUIREMENTS OF SECTION 854 OF THE 2012 STANDARD SPECIFICATIONS.

SCALE: 1" = 2'

ORIGINAL BY: _____	DATE: _____
MODIFIED BY: _____	DATE: _____
CHECKED BY: _____	DATE: _____
FILE SPEC: _____	DATE: _____

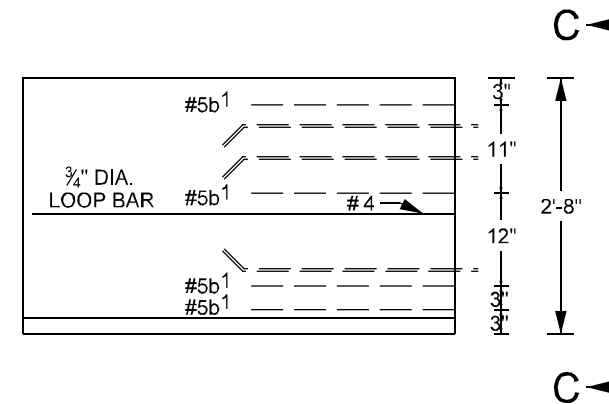
NC DEPARTMENT OF TRANSPORTATION  
DIVISION 13, DISTRICT 1  
US 221 N.  
UNDERPASS WITH CSX RAILROAD

PCB TRANSITION 1 of 2

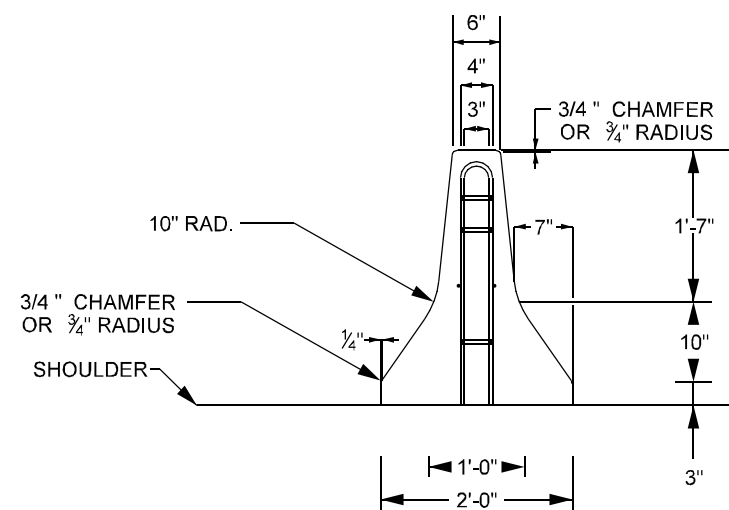


SEE  
GENERAL  
NOTES

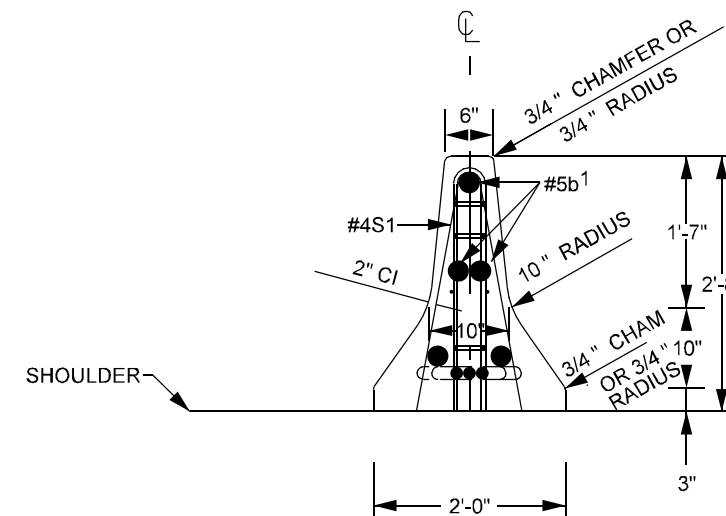
ELEVATION OF  
CONNECTION



ELEVATION



SECTION C-C  
CONNECTION  
END ELEVATION



SECTION C-C  
END ELEVATION

GENERAL NOTES

CONNECTION TO BE COMPATIBLE WITH CONNECTION PROVIDED ON PORTABLE CONCRETE BARRIER, AND CONSTRUCTED IN ACCORDANCE WITH THE APPLICABLE REQUIREMENTS OF SECTIONS 854 AND 1170 OF THE 2012 STANDARD SPECIFICATION.

NC DEPARTMENT OF  
TRANSPORTATION  
DIVISION 13, DISTRICT 1  
US 221 N.  
UNDERPASS WITH  
CSX RAILROAD

PCB TRANSITION 2 of 2

SCALE: 1" = 2'

ORIGINAL BY: _____	DATE: _____
MODIFIED BY: _____	DATE: _____
CHECKED BY: _____	DATE: _____
FILE SPEC.: _____	